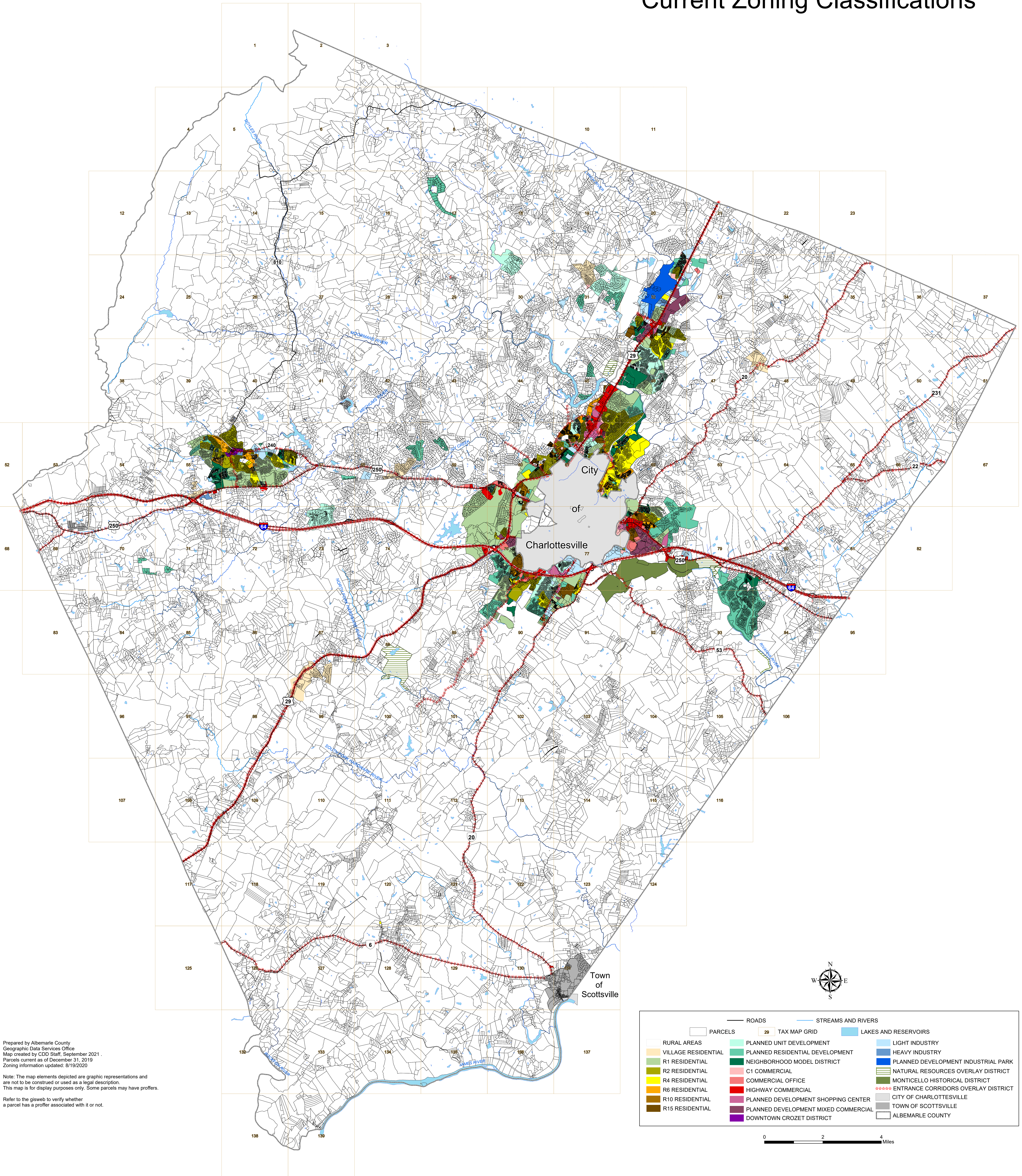


# County of Albemarle Current Zoning Classifications



Prepared by Albemarle County  
Geographic Data Services Office  
Map created by GDD Staff, September 2021.  
Parcels current as of December 31, 2019  
Zoning information updated: 8/19/2020

Note: The map elements depicted are graphic representations and are not to be construed or used as a legal description. This map is for display purposes only. Some parcels may have proffers.

Refer to the GISweb to verify whether a parcel has a proffer associated with it or not.

ROADS	STREAMS AND RIVERS	LAKES AND RESERVOIRS
PARCELS	TAX MAP GRID	
RURAL AREAS	PLANNED UNIT DEVELOPMENT	LIGHT INDUSTRY
VILLAGE RESIDENTIAL	PLANNED RESIDENTIAL DEVELOPMENT	HEAVY INDUSTRY
R1 RESIDENTIAL	NEIGHBORHOOD MODEL DISTRICT	PLANNED DEVELOPMENT INDUSTRIAL PARK
R2 RESIDENTIAL	C1 COMMERCIAL	NATURAL RESOURCES OVERLAY DISTRICT
R4 RESIDENTIAL	COMMERCIAL OFFICE	MONTECELLO HISTORICAL DISTRICT
R6 RESIDENTIAL	HIGHWAY COMMERCIAL	ENTRANCE CORRIDORS OVERLAY DISTRICT
R10 RESIDENTIAL	PLANNED DEVELOPMENT SHOPPING CENTER	CITY OF CHARLOTTESVILLE
R15 RESIDENTIAL	PLANNED DEVELOPMENT MIXED COMMERCIAL	TOWN OF SCOTTSVILLE
	DOWNTOWN CROZET DISTRICT	ALBEMARLE COUNTY

