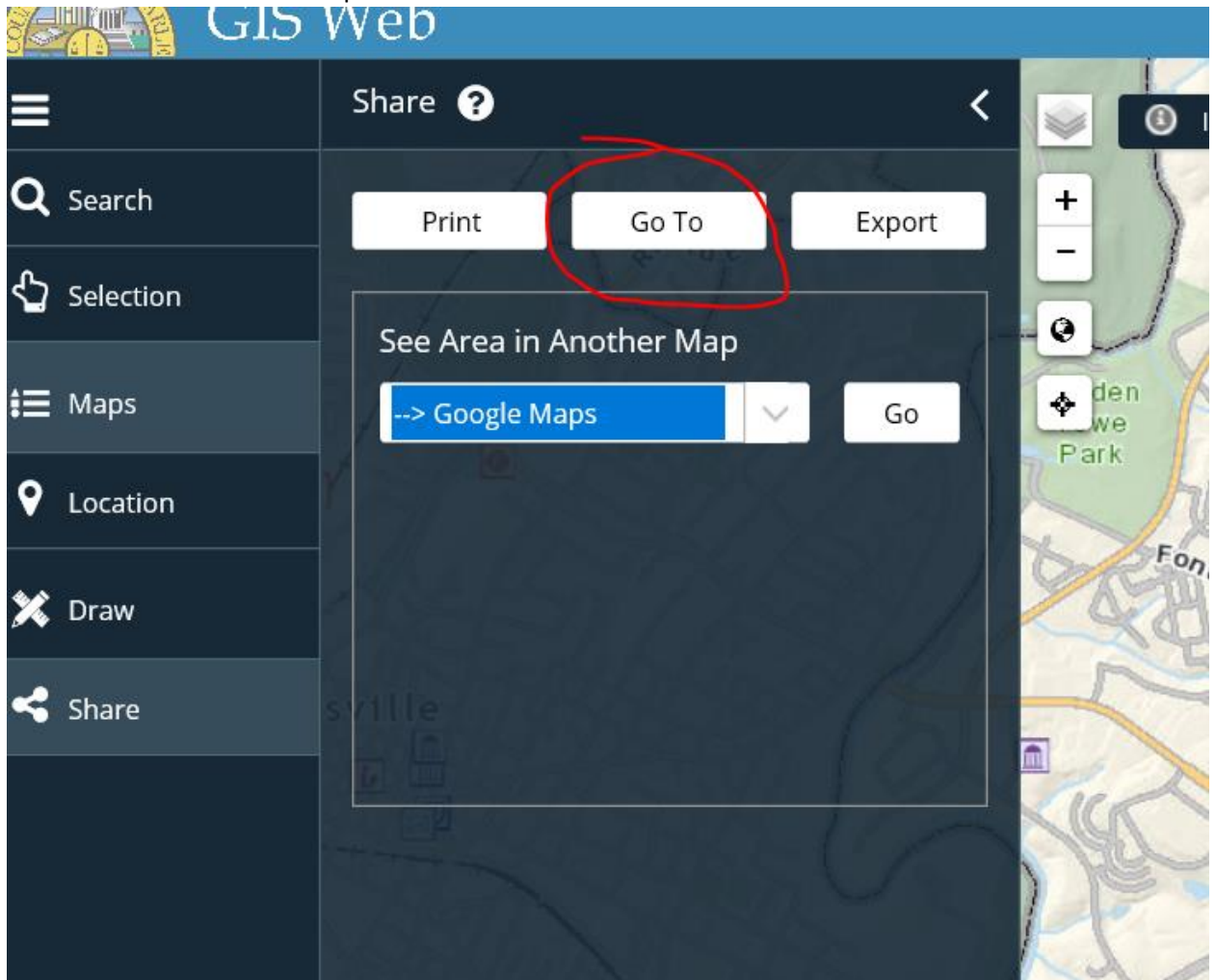


## Printing/Sharing

1. To print a map click on the Share tab and then click on the Print button and hit create.

The screenshot displays the Albemarle County GIS Web interface. The top header features the Albemarle County logo and the text "ALBEMARLE COUNTY GIS Web". A dark sidebar on the left contains navigation options: Search, Selection, Maps, Location, Draw, and Share. The "Share" option is highlighted with a red circle. The main content area is titled "Share" and includes buttons for "Print", "Go To", and "Export". A dialog box titled "Create a Printable PDF Map" is open, showing the following settings: Format: 8-1/2" x 11" Landscape; Title: (empty field); Scale:  Current (1" = 3,009 ft),  Preserve extent width (1" = 5,131 ft), and  1" = 100 ft. The "Create" button at the bottom of the dialog is also circled in red. A map on the right side of the interface shows a portion of Fontana Park.

2. To Go to a different viewer (such as google maps) for the same area you are seeing on the map, click on Go To. Note: This will only take you to the viewer, Albemarle county data will no longer be available to see on the map



3. To export the information as a png or kml click on the Export button

