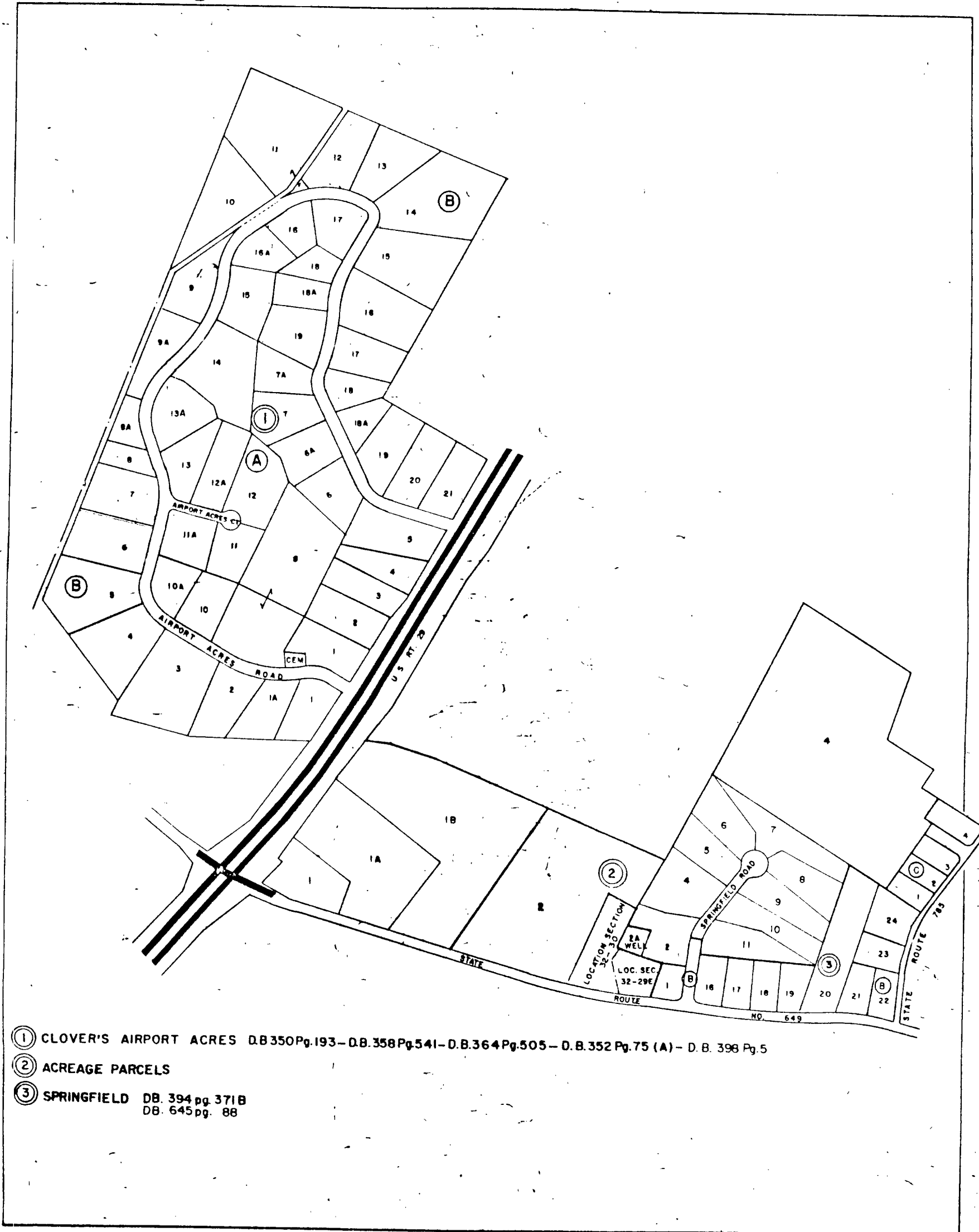


ALBEMARLE COUNTY



- ① CLOVER'S AIRPORT ACRES DB 350Pg.193 - DB.358Pg.541 - D.B.364Pg.505 - D.B.352 Pg.75 (A) - D.B. 398 Pg.5
- ② ACREAGE PARCELS
- ③ SPRINGFIELD DB. 394 pg. 371B
DB. 645pg. 88

SCALE IN FEET
0 200 400 600 800