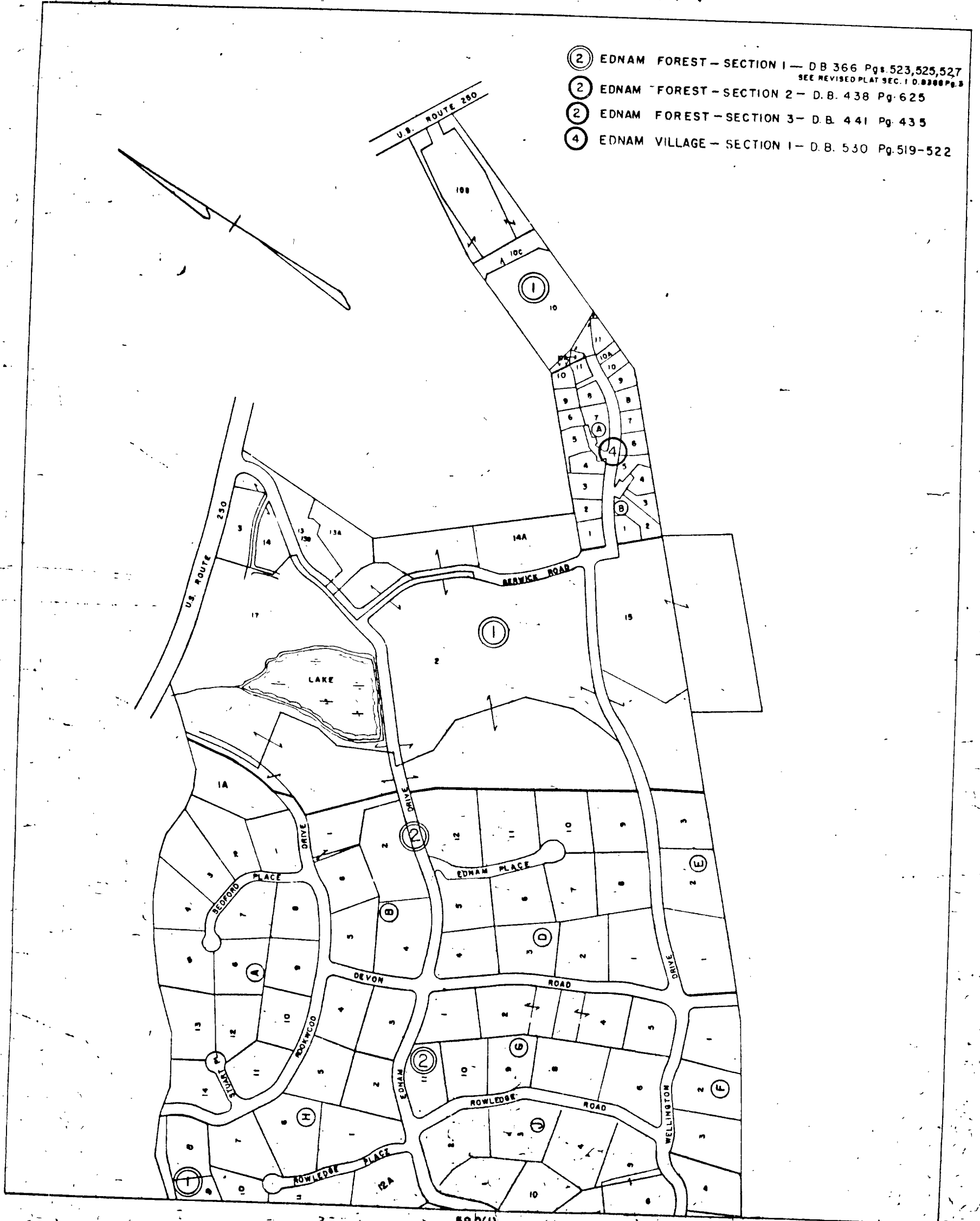


# ALBEMARLE COUNTY

- ② EDNAM FOREST - SECTION 1 - D.B. 366 Pgs. 523, 525, 527  
SEE REVISED PLAT SEC. 1 D. 8300 Pgs. 2
- ② EDNAM FOREST - SECTION 2 - D.B. 438 Pg. 625
- ② EDNAM FOREST - SECTION 3 - D.B. 441 Pg. 435
- ④ EDNAM VILLAGE - SECTION 1 - D.B. 530 Pgs. 519-522



59D(1)

SAMUEL MILLER DISTRICT

SECTION 59D(2)

SCALE IN FEET  
0 100 200 300