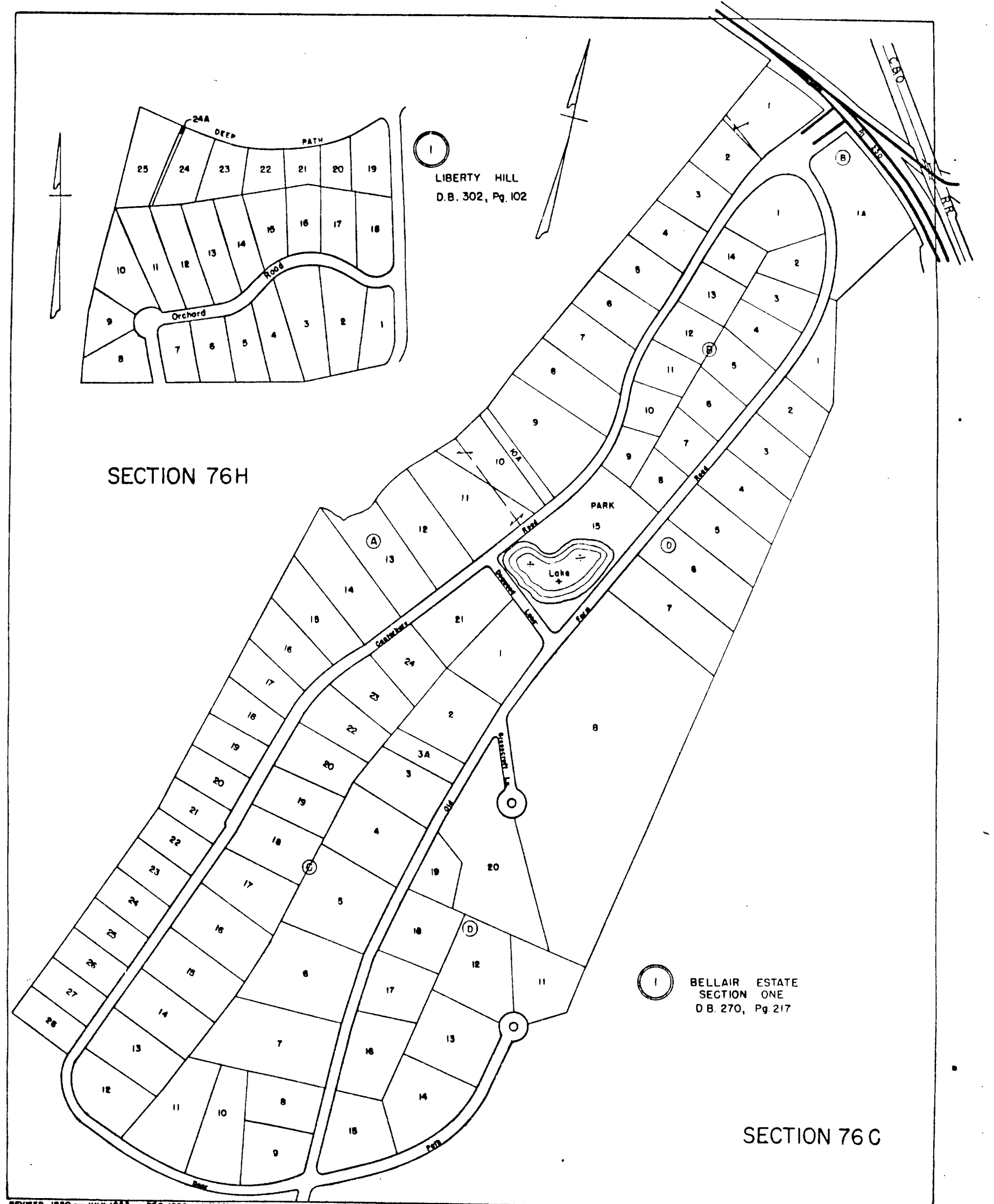


ALBEMARLE COUNTY



SECTION 76H

LIBERTY HILL
D.B. 302, Pg. 102

BELLAIR ESTATE
SECTION ONE
D.B. 270, Pg. 217

SECTION 76C

REVISED 1950 - JULY 1953 - DEC. 1956 - N/1/61
SCALE IN FEET
0 100 200 300 400 500

SAMUEL MILLER
DISTRICT

SECTION 76C & 76H