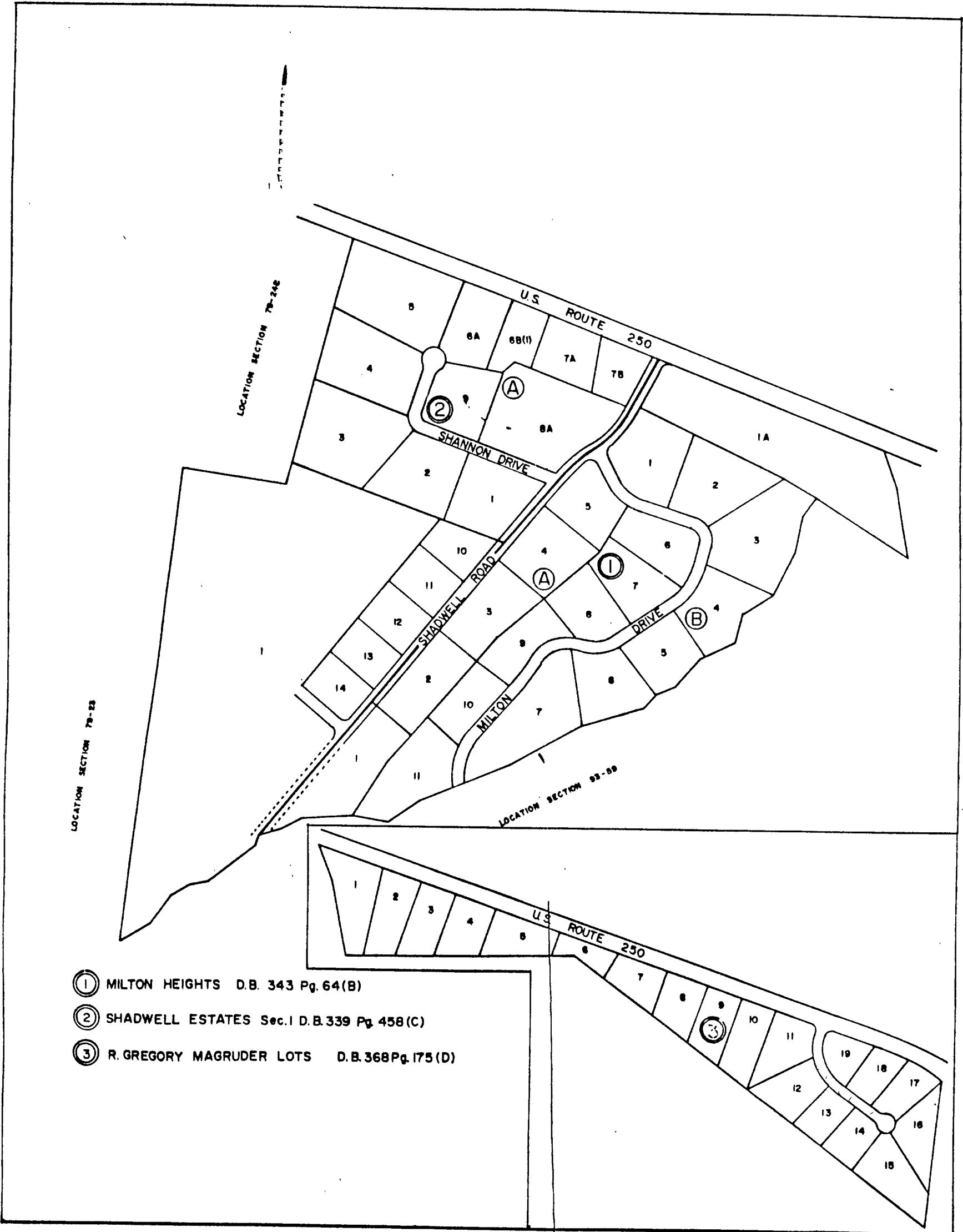


ALBEMARLE COUNTY



- ① MILTON HEIGHTS D.B. 343 Pg. 64(B)
- ② SHADWELL ESTATES Sec. I D.B. 339 Pg. 458(C)
- ③ R. GREGORY MAGRUDER LOTS D.B. 368 Pg. 175(D)

0 100 200 300 400 500 600

RIVANNA DISTRICT

SECTION 79-B, C, D,